



Installation instructions MEMOLUB® HPS



CE IP66 MEMOLUB INTERNATIONAL S.A.
MADE IN BELGIUM

PRECAUTIONS

- Do not open the housing: loaded spring
- Hold MEMOLUB® down during manual checks
- Leq < 70 dB
- Use MEMOLUB® only for greasing machinery
- Use only lubricant cartridges and batteries recommended by the manufacturer

CONTENTS

	Technical informations	page 2
A	Replacing cartridge	page 4
B	Direct installation.....	page 4
C	Remote installation.....	page 5
D	Check Function	page 5

TECHNICAL INFORMATION

Setting and Installation

Setting of MEMO through combination of 3 plastic rings: black, white and red



∅ 50 mm	∅ 44 mm	∅ 38 mm	hour(s) Freq.	month(s)		
				120 cc	240 cc	480 cc
x			48	12	24*	-
	x		24	6	12	24*
x	x		16	4	8	16
		x	12	3	6	12
x		x	6	-	3	6
	x	x	2	-	1	2
x	x	x	1	-	1/2	1

* Only with MEMOLUB® EPS model. (For specific settings, consult your MEMOLUB® distributor).

Electric specifications

	HPS*	EPS 24 V	PLCd
Power source	Int.	Ext.	Ext.
Voltage	4,5 V DC	24 V DC	24 V DC
Amperage	NA	< 0.5 A	< 0.5 A
Short circuit protection	ok	ok	ok
Polarity protection	NA	ok	ok
Stroke duration	8 sec	4 sec	4 sec
Minimum time between strokes	1 hour	1 hour	10 minutes
Maximum cable length	NA	> 10 m	> 10 m
Wire section	NA	2 x 0.5 mm ²	2 x 0.5 mm ²

* ATEX CE IP66  / Ex nC IIB T6 Gc  / Ex tc IIIC T85°C IP66 Dc

Remote installation

Tube lengths with multi-function grease N.L.G.I. 2, tubes int. 6 mm and fittings M8 minimum

Viscosity	Remote
1000 cSt	8 m
3000 cSt	6 m
5000 cSt	4 m
9000 cSt	2 m
15000 cSt	1 m



Tube



Fitting

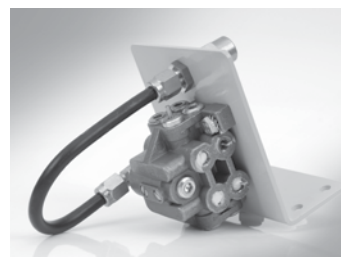
Installation with distributor

With distributor blocks 2 to 8 outlets

With splitter MEMO	With progressif distributor block*
4 m	6 m
3 m	5 m
2 m	4 m
1 m	2 m
NA	1 m



With splitter MEMO

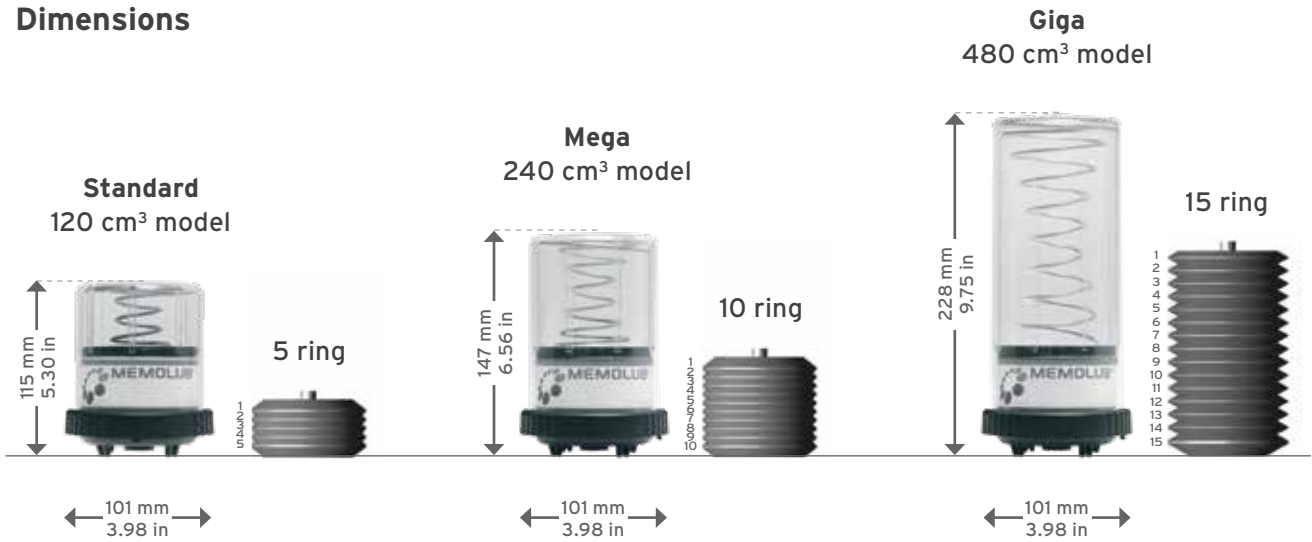


With progressif distributor block*

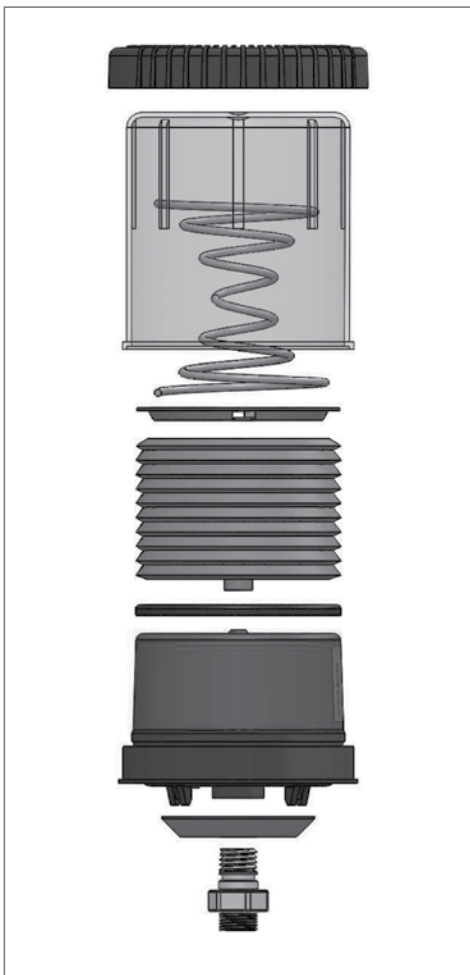
* Recommended by manufacturer

TECHNICAL INFORMATION

Dimensions



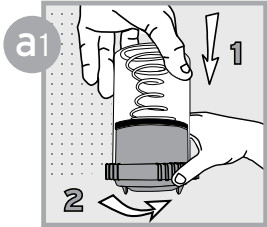
Mounting view



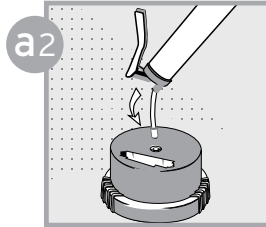
Temperature exposure range

-40°C > +50°C

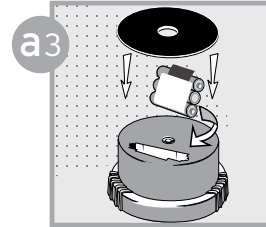
A REPLACING CARTRIDGE



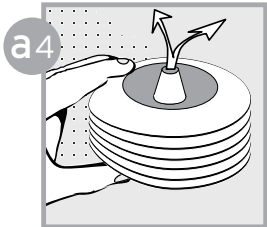
Open (fingers on ribs)



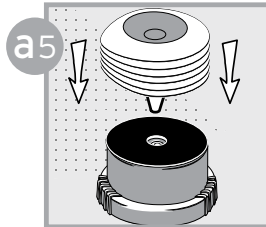
Prime MEMOLUB®



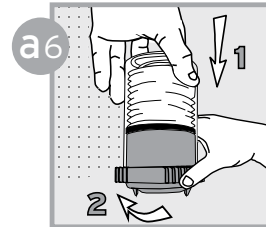
Insert new battery pack and seal



Squeeze air out of cartridge

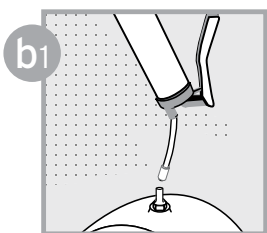


Replace cartridge

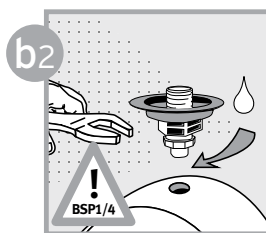


Close and lock (fingers on ribs)

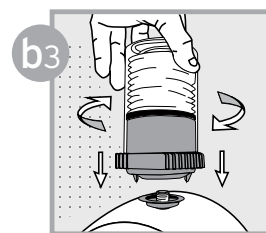
B DIRECT INSTALLATION



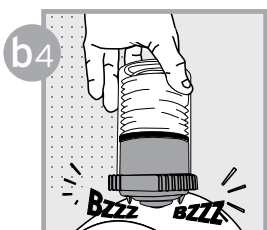
Prime lube point and remove nipple



Screw in Memo using threadlocker

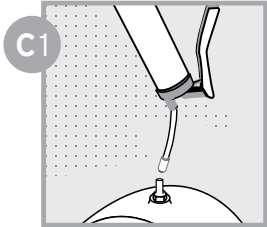


Install MEMOLUB® on Memo

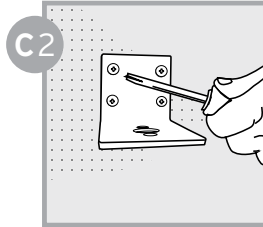


MEMOLUB® works immediately

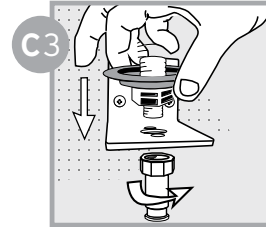
C REMOTE INSTALLATION



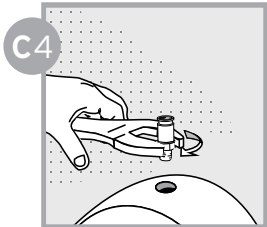
C1 Prime lube point and remove nipple



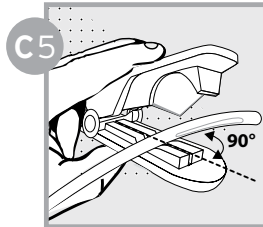
C2 Secure bracket



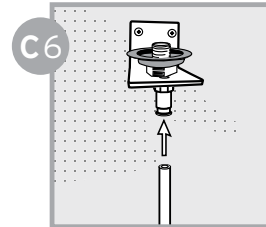
C3 Install Memo and F1/4 fitting



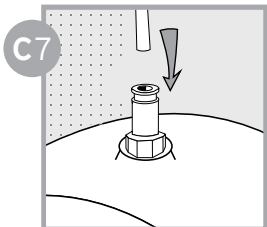
C4 Screw BSP 1/8 fitting



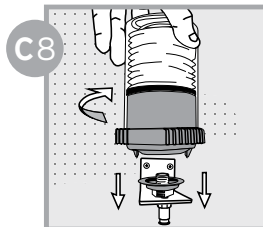
C5 Cut hose to required size



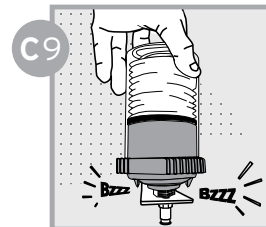
C6 Insert hose into quick fitting



C7 Insert hose into quick fitting

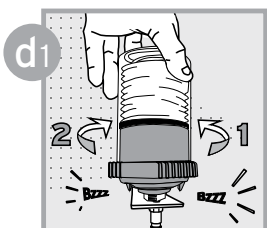


C8 Install MEMOLUB® on Memo

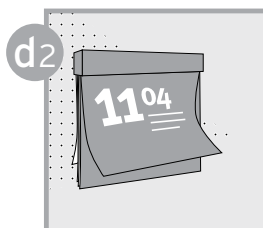


C9 MEMOLUB® works immediately

D CHECK FUNCTION



d1 To check unit: unscrew and screw again



d2 Check regularly